

life
valet



Vibe

DESIGNER GRAB BARS

For Residential and Commercial Use

INSTALLATION GUIDELINES



Read this manual carefully prior to installation.

Important Safety Warnings

PLEASE READ CAREFULLY PRIOR TO INSTALLING
THE GRAB BAR SYSTEM

Definitions

WARNING May cause serious injuries or death

CAUTION May cause property damage

For information on LifeValet Installation Guidelines, see:

www.lifevalet.com

When installing and using this Grab Bar System, basic safety precautions should always be followed, including:

WARNING: Do not mount on hollow wall surfaces such as drywall, sheetrock, plaster, fiberglass, acrylic, or similar materials without solid backing. Do not affix grab bars directly to hollow, steel studs. In order to support the maximum weight limit, grab bars must be anchored to solid blocking installed between wall studs or to the studs themselves.

WARNING: Use the hardware and mounting screws included with the product. If a hollow-wall-type anchoring system is used, it must be certified by its manufacturer as ADA compliant, for use with grab bars, and compatible with Vibe's wall-mount profile.

WARNING: Do not modify the product in any way. Modification of the product will void all product certifications and warranties.

WARNING: Be careful not to penetrate existing pipes or electrical lines when screwing into a wall. Damage, injury, or death may occur.

Save this Installation Guide.

Table of Contents

Tools Needed for Installation.....	P.4
Parts List Worksheet.....	P.5
Site Preparation.....	P.6
Installation Overview.....	P.7
Subsurface Preparation.....	P.8
Unpacking	P.9
Preliminary Installation.....	P.10
Mounting Plates Installation.....	P.13
Tile Inlay Installation.....	P.14
Grab Bar Final Position Installation	P.16
Joining Multiple Bars Assembly and Options.....	P.17

Congratulations on the purchase the Vibe Grab Bar from LifeValet!

NOTE: This Installation Guide is for the LifeValet Vibe Grab Bar system only. For the installation of other LifeValet Grab Bar models, please visit www.lifevalet.com or contact your sales representative.

Figure 1: Tools Needed for Installation



Fine-tipped
Permanent
Marker



Diamond
Drill Bits



Tape
Measure



Waterproof
Construction
Adhesive
& Gun



Level



Torque
Wrench
Capable of reading
14 in.-lbs. (1.58 N-m)



Drywall Saw



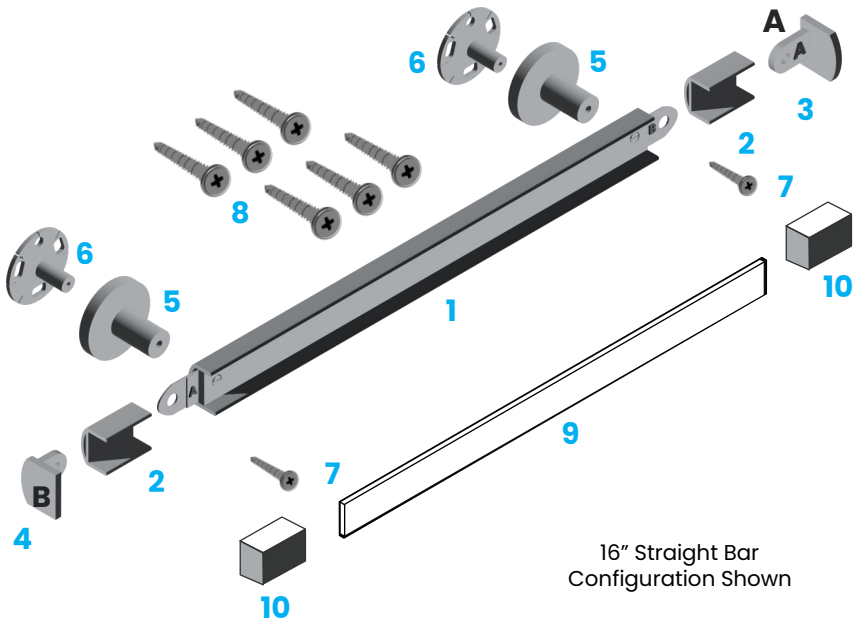
Stud Finder
Sensor

DESIGNER GRAB BARS – Installation Guidelines

Figure 2: Parts List

The following is a list of parts for the Vibe Grab Bar system.

Item	Description
1	Vibe Main Bar Sub Assembly
2	Connectors (2) (Straight, 120-Degree, or 90-Degree)
3	End Cap - A
4	End Cap - B
5	Wall Extensions (2)
6	Mounting Plates (2)
7	SS 5/16"-24 x 1" Phillips Flat Head Screw (2)
8	Mounting Plate Screws, 21/64 x 2" (6)
9	ABS Installation Spacer
10	Connector Inserts (2)



LifeValet

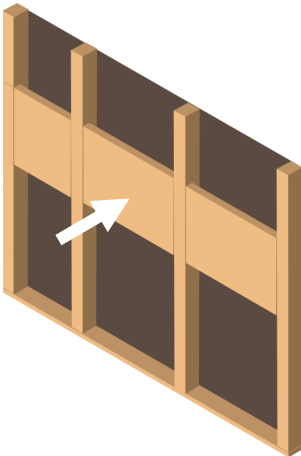
Site Preparation

LifeValet recommends installation by a qualified professional using current ADA installation practices for grab bars as detailed by ANSI 117.1 sections 416.4 and/or ASTM F446-19. R23.

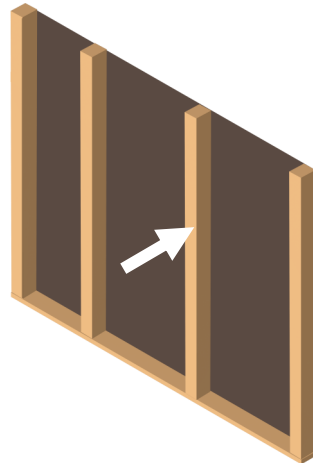
Vibe Grab Bars must be mounted directly to wall studs or appropriate solid blocking between studs and affixed using a **minimum** of two screws per mounting plate.

If a hollow-wall-type anchoring system is used, it must be certified by its manufacturer as ADA compliant, for use with grab bars, and compatible with Vibe's wall-mount profile. Follow the installation instructions provided by the product's manufacturer.

Solid Blocking Option:



Wall Stud Option:



Note: Double-check that all required Grab Bar assemblies, connectors, and/or components are on hand to ensure correct installation.

Please contact your Sales Representative or Customer Care (sales@lifevalet.com or 833.543.8253) at LifeValet for assistance.

Installation Overview

1. Subsurface preparation, install blocking
2. Unpack the grab bar
3. Prepare the main bar for installation (see Page 9)
4. Preliminary Installation, mark the wall position of the mounting plates
5. Grab Bar Installation on the mounting plates
6. Cut and install your tile inlay, connector inserts
7. Finalize installation of your grab bar



LifeValet

Subsurface Preparation

Vibe grab bars must be screwed into solid blocking installed between studs or to the studs themselves. This subsurface preparation is made before the finished wall and final veneer are in place. Be sure to have all blocking in place and located prior to installing grab bars

If a hollow-wall-type anchoring system is used, it must be certified by its manufacturer as ADA compliant, for use with grab bars, and compatible with Vibe's wall-mount profile. Follow the installation instructions provided by the product's manufacturer.

Regardless of type of installation, LifeValet recommends installation by a qualified professional using current ADA installation practices for grab bars as detailed by ANSI 117.1, sections 416.4 – 4.26.4 and/or ASTM F446-19. R23.



Unpacking

Unpack the grab bar and components from the box onto a soft, non-abrasive surface and layout all pieces as presented on page 5, Figure 2: Parts List. Check that all components are present and have not been damaged in shipping. **Throughout the installation, refer to Figure 2: Parts List on Page 5 to easily identify components.**

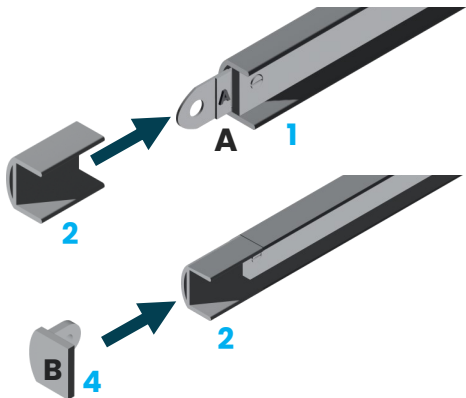
Preliminary Installation

Note: End-Cap “B” connects to the “A” side of the Main Bar.

Remove Connector Inserts (10), and set them aside.

Left-End Assembly

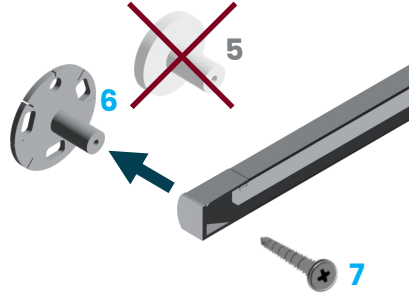
1. Set the main bar so that the empty cavity faces you.
2. Locate parts 4, 2, and 1. Align them as shown. Each End Cap is marked either “A” or “B.” Ensure that the Left-Side End Cap, Part 4 is marked as “B”. Connectors are universal, so are interchangeable.
3. Join Connector (2) onto the Main Bar (1) at the “A” End. Then insert “B” End Cap (4) into Insert Connector (2).



LifeValet

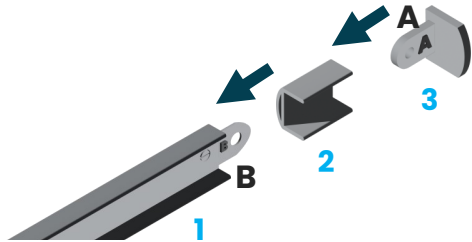
Preliminary Installation:

4. As part of the preliminary installation process, use Screw (7) to attach the Main Bar Assembly to the Mounting Plate (6)-not the Wall Extension (5). **This preliminary step is necessary.** Be sure the down arrow on the mounting plate faces DOWN.



Right-End Assembly

5. Repeat the Steps from the Left-End Assembly for the Right-End Assembly. Join Connector (2) onto the Main Bar (1) at the "B" End. Then insert "A" End Cap (3) into Insert Connector (2).



DESIGNER GRAB BARS – Installation Guidelines

6. The main bar is now screwed to the two mounting plates and is ready for the next step.

7. Mounting Plate Positioning:

a) Position the grab bar at the desired location on the wall, ensuring the mounting plates are flush against the surface and aligned with the Studs or the Solid Blocking in the wall.

b) Use a level to confirm the grab bar is level or aligned at the desired angle.

c) With a fine-tipped permanent marker, mark the positions of the screw holes on each mounting plate. Be sure the “Down” arrow is facing down.

d) **Each mounting plate must be installed with a minimum of two screws.**



Preliminary Installation (continued):

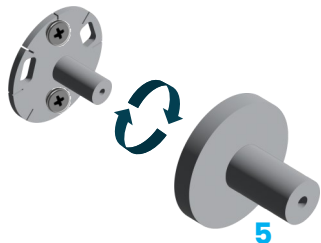
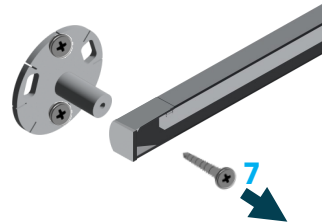
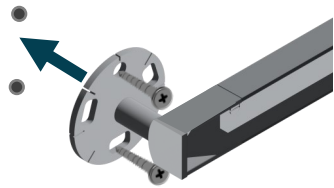
8. **When drilling through porcelain tile, consult the tile manufacturer for their recommendations.**
- a) LifeValet recommends that you begin by drilling a shallow pilot hole to ensure precise control in the next step.
 - b) Keep the drill area wet during the process by using a wet sponge or spraying water with a spray bottle to cool the bit and reduce dust.
 - c) Use a ¼" drill bit designed specifically for "Glass and Tile."
 - d) Standard masonry or carbide-tipped drill bits may not perform effectively for this task. Use "glass and tile" drill bits, such as those from Milwaukee or comparable brands, which are readily available at most hardware stores.
 - e) After creating the pilot hole, use a ¼" diamond micro-hole saw, such as those from Milwaukee or similar brands, to drill completely through the tile.
 - f) Always follow the manufacturer's instructions for their products.
 - g) Refer to the marks you previously made for the mounting plates, and drill each hole according to these guidelines.



Mounting Plates Installation:

Installing into solid blocking: Use these steps when mounting grab bars to pre-prepared solid blocking inside the wall. **For Mounting Instructions with Specially-Designated Grab Bar Wall Anchors, follow the Manufacturer's Installation Instructions.**

9. With all holes drilled and ready to receive the grab bar, attach the mounting plates to the wall in the prepared locations using screws (8). If the Main Bar is blocking any of the screw locations, the screws can be left out until Step 11.
10. Remove the left and right screws (7) holding the Main Bar Assembly to the Wall Mounting Plates.
11. Install any screws (8) that were previously blocked by the Main Bar Assembly.
12. Position the Wall Extension (5), onto the threaded shaft of the mounting plate and carefully screw clockwise until the wall extension is hand-tight and snug against the wall. Repeat for the remaining Wall Mount(s).



CAUTION: Do not use tools to tighten the wall extension. It is not necessary and damage may occur.

Tile Inlay Installation:

Note: The Connectors and End Caps are not shown for clarity.

Cut a rectangle of your porcelain tile.

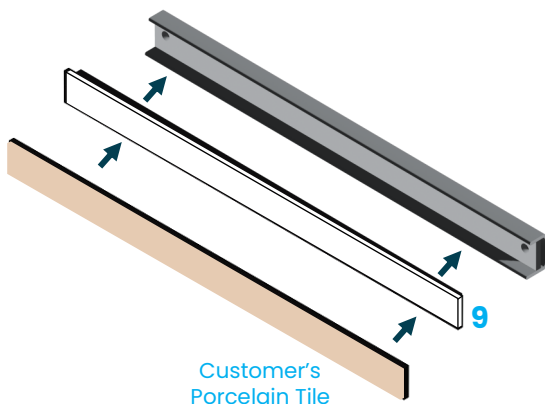
For 16" Vibe Grab Bar:

Precisely $14 \frac{3}{8}"$ L x 1" W
(shown in diagram)

For 24" Vibe Grab Bar:

Precisely $22 \frac{3}{8}"$ L x 1" W

Note: Installation Spacer (9) will be in two segments



1. Use the included Installation Spacer (9) to set your tile inlay into the Vibe grab bar. The Installation Spacer together with the appropriate adhesive can accommodate tile thicknesses ranging from 6.3 mm to 10 mm.
2. Perform a dry test by placing your tile inlay into the cavity of the Vibe grab bar to ensure a snug fit on all four sides.
3. Lay the tile face down on a clean and flat work surface.
4. Run a $\frac{1}{4}"$ bead of waterproof construction adhesive (LifeValet recommends **Liquid Nails Fuse-It Max or comparable**) along the length of your tile inlay.

CAUTION: Avoid adhesive contacting the finish surfaces of the bar as damage may occur.

5. Carefully place the Installation Spacer onto the adhesive. Press it lightly into place, ensuring it is centered on the tile inlay with some space around the perimeter.

DESIGNER GRAB BARS – Installation Guidelines

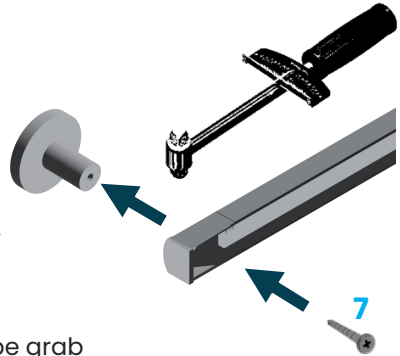
6. Lay the main Grab Bar in the foam liner of the packing box that your Grab Bar came in.
7. Run a 1/4" inch bead of adhesive along the center of the grab bar. Excess adhesive is unnecessary for a strong bond. Ensure there is enough adhesive to secure the Installation Spacer/Tile Inlay Assembly **but avoid using so much that it oozes out when pressed into place.**
8. Gently place the Installation Spacer/Tile Inlay Assembly onto the adhesive in the grab bar. The tile inlay should face up, and the Installation Spacer (9) should face down into the grab bar.
9. Use a flat board at least 2" wide to press the tile inlay into place. The board should contact the two long sides of the grab bar, ensuring a flush finish.
10. Remove the wood board and check for any adhesive that may have squeezed out. Carefully clean any visible excess adhesive to maintain a neat appearance.
11. Turn the entire grab bar and tile inlay assembly upside down on a perfectly flat surface. Allow it to cure according to the manufacturer's instructions. This final step ensures that the top surfaces of the grab bar and tile inlay are perfectly flush.

LifeValet

Installation of the Grab Bar into Final Position :

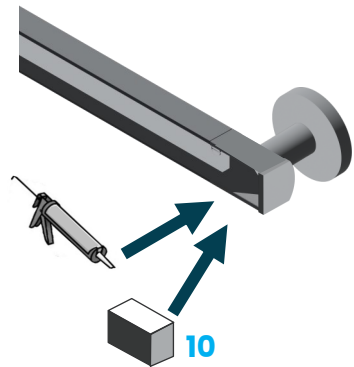
Place the assembled grab bar on top of the wall extensions and reusing screws (7), tighten until snug. Use a torque wrench to tighten to 14 in-lbs or 1.58 N-m.

Test the integrity of your installation by gradually applying downward pressure on the center of the bar. There should be no movement. The Vibe grab bar is engineered to withstand a minimum of 300 lbs. of downward force.



Installing the Connector Inserts:

Run a light bead of adhesive at the base of each connector's (2) cavity. Place a Connector Insert (10) into the connector (2) and press down until it seats into position. The top of the Connector Insert should be aligned and flush with the top of the grab bar. Repeat for the other Connector Inserts.

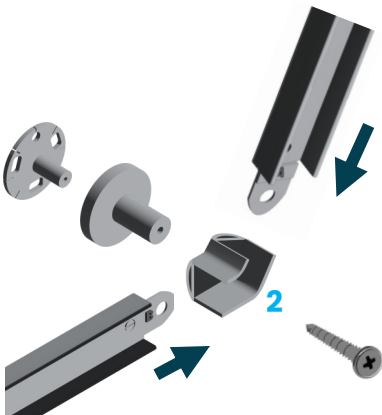


Congratulations! You have successfully installed your Vibe Grab Bar.

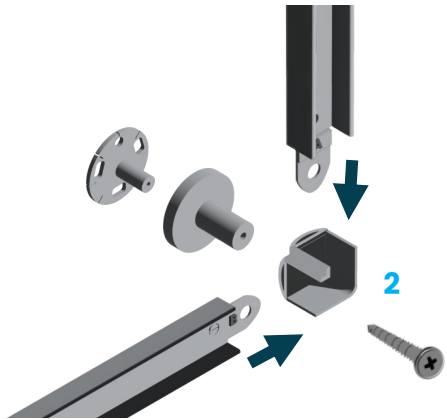
Multiple Bar Connector Options:

Vibe Grabs are modular. This means that you can use one of our stock connectors to join bars into 90 degree or 120 degree angles. Please speak to your sales representative or contact LifeValet customer service (sales@lifevalet.com or 833.543.8253) for more information.

120-Degree Connector



90-Degree Connector



LifeValet



DESIGNER GRAB BARS – Installation Guidelines



LifeValet Product Support:

Please contact your Sales Representative or
call (833) 543-8253.

www.lifevalet.com

Retain this guide for future reference.



SAFETY.

Made Beautiful